

**Digital infrared thermometer with fibre optic  
designed for the glass industry**

**IS 50-LO/GL**



- Adjustable temperature ranges between 600 and 1800°C
- High accuracy
- Ambience up to 250°C without cooling
- Robust design
- Simple parametrizing
- Integrated air purge
- Quick release for optical head
- Two wire technique



The pyrometer **IS 50-LO/GL** is specially designed for the glass industry. It is used for the temperature measurement of glass in tank, working end, forehearth and feeder. Additional applications are the measurement of brickworks in regenerator and tank.

Using a robust fiber optic cable (length up to 30 m) enables the use

of the instrument in an ambient temperature up to 250°C without cooling.

The IS 50-LO/GL is a digital pyrometer in **two wire technique**. This technique combines the high accuracy of the digital signal processing with the simple connection and operating with two wires.

The emissivity is exactly adjustable at the device, additionally any sub range and the response time via service interface. The instrument is equipped with a test function to check the correct connection.

## Technical Data

Temperature range:	600 ... 1800°C
Sub range:	any range adjustable within the measuring range, minimum range 51°C
IR-detector:	Silicon photo diode
Spectral range:	0.8 ... 1.1 µm
Data handling:	Digital
Uncertainty:	< 1500°C: ± 0.3% of meas. value in °C + 1°C > 1500°C: ± 0.5% of meas. value in °C + 1°C
Repeatability:	0.1% of measured value in °C + 1°C
Resolution:	1°C
Emissivity ε:	0.05 ... 1.00; adjustable
Response time t <sub>90</sub> :	250 ms, adjustable up to 10 s; ex works adjusted to 1 s
Test port:	4 ... 20 mA, temperature linear
Max. load:	700 Ohm at 24 V power supply
Temperature dependency:	0.2°C per °C variation from 23°C
Power supply:	24 V DC ± 25%, ripple max. 50 mV
Power consumption:	0.6 W
Interface:	Service interface RS232
Parameter settings:	Emissivity, test signal 12 mA
Additional parameters via interface:	Measuring range, response time
Protection:	IP65 with mounted cable
Ambient temperature:	0 ... 70°C at the housing
Storage temperature:	-20 ... 70°C
Rel. humidity:	Non condensing conditions
Converter housing:	Alu die-casting, 125 mm x 80 mm x 57 mm (L x W x H, without plug)
Optical head:	Stainless steel, 112 mm x 22 mm
Fiber optic:	Multi fiber with flexible stainless steel protection
Weight:	600 g
CE-label:	According EU rules for electromagnetic immunity



## Typical Applications

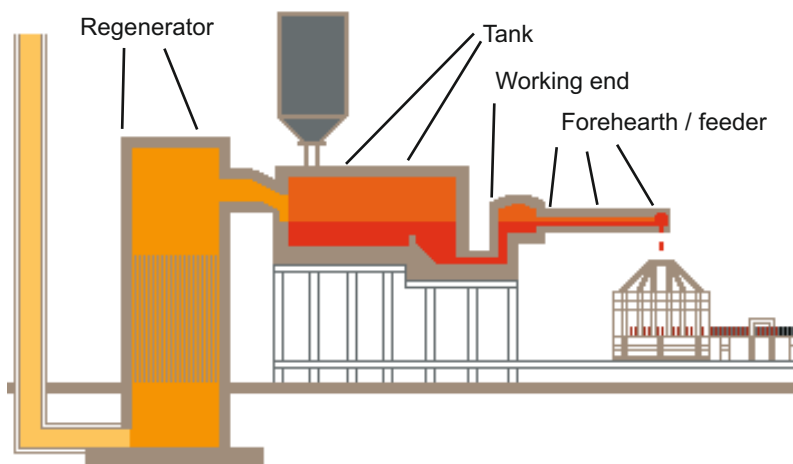
### Glass temperature measurement

- in forehearth
- in feeder
- in tank

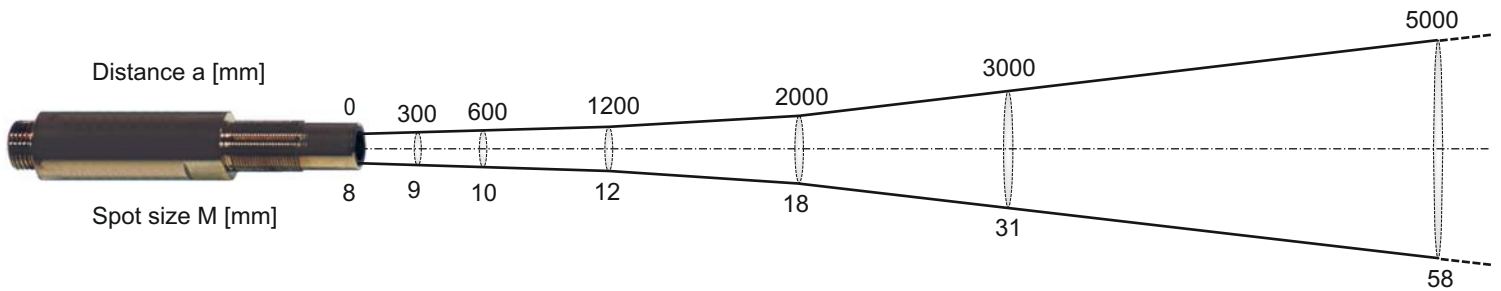
### Temperature measurement of brickworks

- tank side walls
- tank roof
- in regenerator

The different sighting tubes enable to adapt the pyrometers optimally to the different applications. For an easy installation of the pyrometers it is possible to separate the optical head and converter from the fiber optic.



## Measuring Distance and Spot Sizes



## Reference Numbers

### Pyrometer:

3 857 900 IS 50-LO/GL, 600 ... 1800°C, with fibre optic 5 m and optical head

### Scope of delivery:

Converter, optical head, fiber 5 m  
(a connection cable is not included in scope of delivery.)

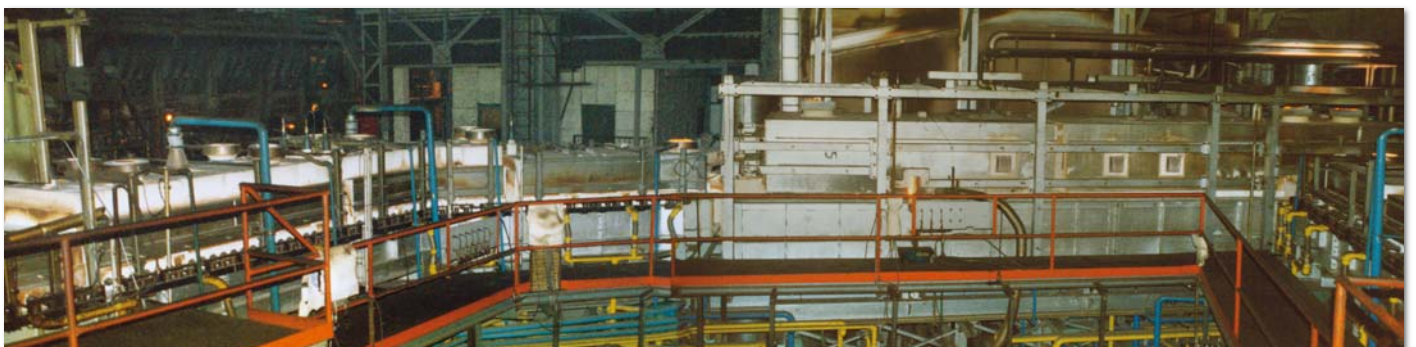
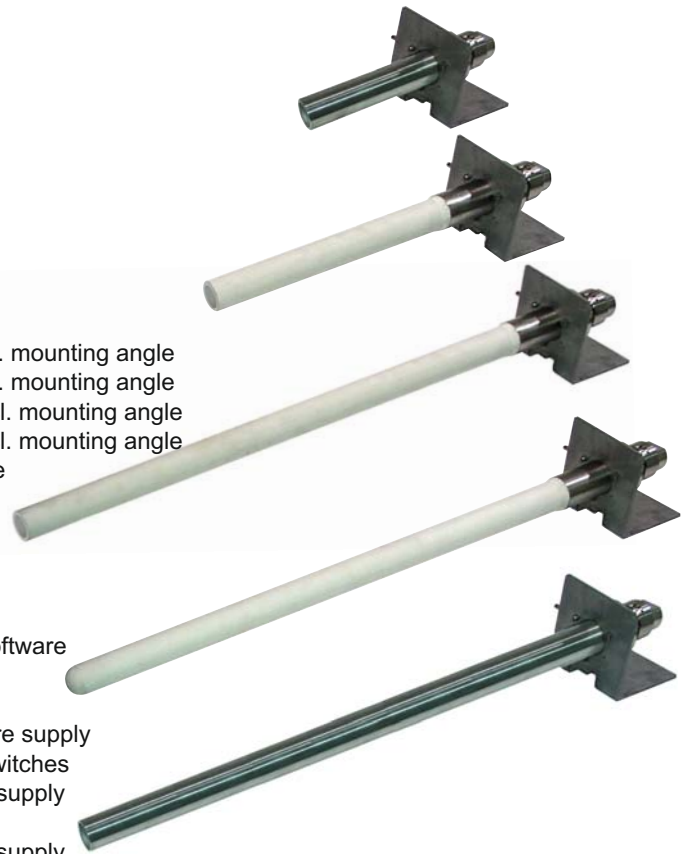
### Accessories:

3 820 650 Connection cable, length 5 m  
3 820 660 Connection cable, length 10 m  
3 820 670 Connection cable, length 15 m  
3 820 680 Connection cable, length 30 m

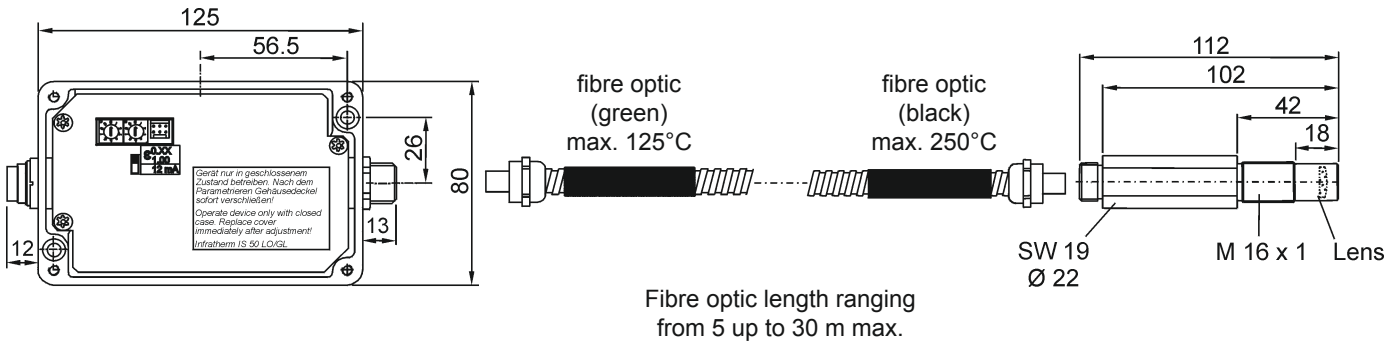
On request: Other length of fiber optic: 10 m, 15 m and 30 m

3 835 300 Air purge unit with inconel tube, 140 mm, open, incl. mounting angle  
3 835 380 Air purge unit with inconel tube, 600 mm, open, incl. mounting angle  
3 835 310 Air purge unit with ceramic tube, 300 mm, open, incl. mounting angle  
3 835 370 Air purge unit with ceramic tube, 600 mm, open, incl. mounting angle  
3 835 390 Ceramic tube, 600 mm, closed, incl. mounting angle  
3 835 400 Air purge unit incl. mounting angle

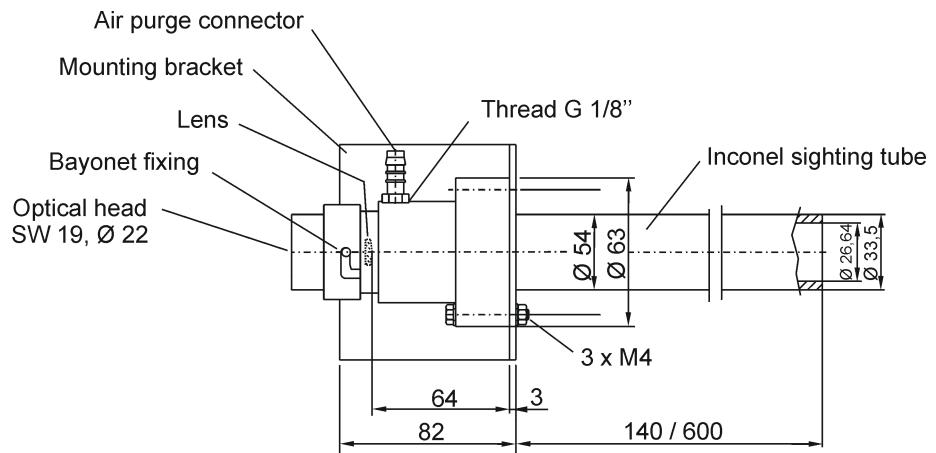
3 836 900 Spare ceramic tube, 300 mm, open  
3 836 700 Spare ceramic tube, 600 mm, open  
3 836 710 Spare ceramic tube, 600 mm, closed  
3 820 370 RS232 adapter cable for HT 6000 or PC incl. PC software  
3 820 980 RS232 adapter cable HT 6000  
3 890 600 Din-rail power supply  
3 890 640 DA 4000-N: LED digital display with integrated 2 wire supply  
3 890 650 DA 4000: like DA 4000-N, additionally with 2 limit switches  
3 890 520 DA 6000: LED digital display with integrated 2 wire supply and serial interface RS232  
3 890 530 DA 6000: LED digital display with integrated 2 wire supply and serial interface RS485  
3 826 500 HT 6000: Battery driven, portable parametrizing unit  
3 863 010 Converter IW 5-C (4 ... 20 mA in 0 ... 20 mA)



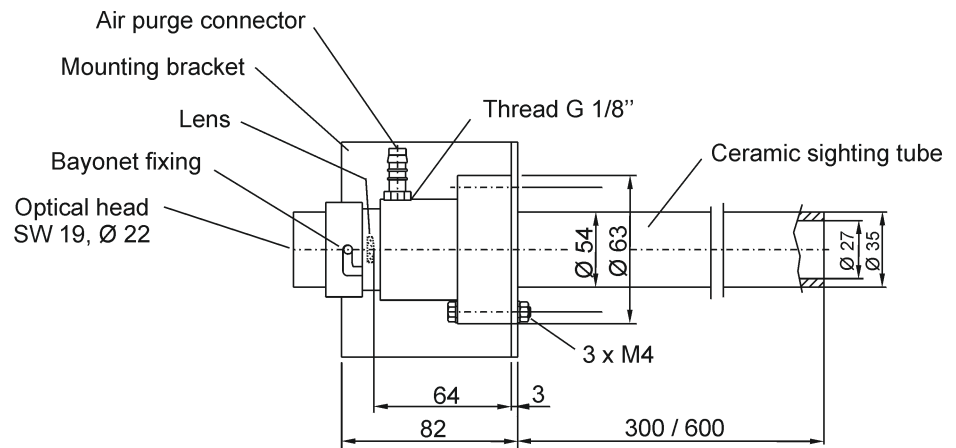
# Dimensions



## Air purge with inconel tubes:



## Air purge with ceramic tubes:



## LumaSense Technologies

### Americas and Australia Sales & Service

3301 Leonard Court  
Santa Clara, CA 95054

Tel.: +1 408 727-1600

Fax: +1 408 727-1677

[info@lumasenseinc.com](mailto:info@lumasenseinc.com)

### Europe, Middle East, Africa

Sales & Service  
D-60326 Frankfurt, Germany  
Kleyerstr. 90

Tel.: +49 69 97373-0

Fax: +49 69 97373-167

### India

Sales & Support Center  
Mumbai, India

Tel.: +91 22 67419203

Fax: +91 22 67419201

### China

Sales & Support Center  
Shanghai, China

Tel.: +86 21 5882 2277

Fax: +86 21 5887 0077

**SARLIN**

SARLIN OY AB • PL 750, 00101 Helsinki  
Käyntiosoite: Kaivokselantie 3-5, 01610 Vantaa  
Vaihde 010 550 4000 • Fax 010 550 4201  
[info@sarlin.com](mailto:info@sarlin.com) • [www.sarlin.com](http://www.sarlin.com)