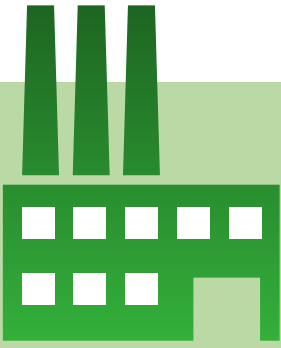


# Energy AnalytiX<sup>®</sup>

Advanced Energy Management for Manufacturing



Visualize Your Enterprise™



# Analytics for a Greener Plant

Energy AnalytiX® will save you between 5% and 25% annually on your utility bills.

In today's competitive global economy, with soaring energy prices and increasing environmental regulations, profitability and the ability to quickly analyze and closely control operating costs has become ever more critical. A smart integrated energy management solution can easily save money and translates into a greatly improved bottom line. Everyone is looking for ways to reduce consumption, monitor conditions, lower energy costs and minimize carbon emissions.

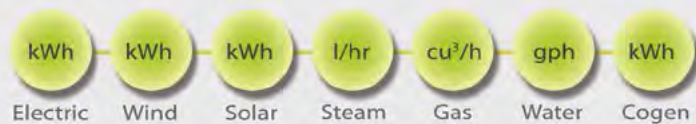
Now, sustainability and plant managers of manufacturing facilities, industrial plants and refineries have a revolutionary smart energy Web solution that is easy to apply, configure and operate. It provides universal data connectivity and integration to a wide variety of PLC, DCS, SCADA automation systems and metering systems.

Energy AnalytiX® delivers the back end calculation, KPI analytics, data historian, reporting and rich visualization you need to take decisive action to reduce and manage your utility costs and carbon footprint.

- Quick to deploy and achieve ROI
- Realize cost savings through informed decisions
- Standard cost, consumption and carbon reports
- Drill down into causes of abnormal energy use
- Identify opportunities to conserve energy between production runs

## Sustainability Process

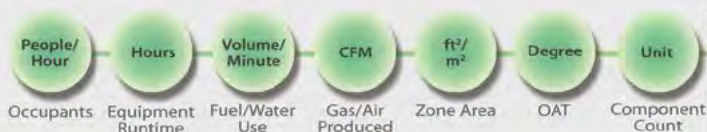
### Consumption



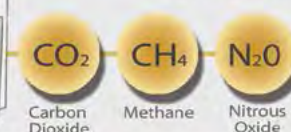
### Costs



### Conditions



### Carbon





## Improve your bottom line and the environment

### Rich Visualization Dashboards and Kiosks

Energy AnalytiX can deliver rich platform and browser-independent real-time visualization over the Web to address applications from a single plant to a global enterprise. Create IT firewall-friendly, secure custom production dashboards and kiosks to view energy reports analyzing your energy consumption patterns and resource usage. Plant managers, operations or maintenance personnel can intuitively navigate and find opportunities for improvement and cost savings.

Energy AnalytiX provides secure, long-term data storage of information needed to correlate expected and unexpected resource use. Collect data from resources such as electricity, water, steam, oil and gas. Conditions that affect resource consumption are also collected and might include equipment operating temperature, outdoor air temperature (OAT), batch or product type produced, equipment runtimes, equipment amperage, fuel/water gallons per minute and duct air pressures. This capability facilitates understanding not only what is consumed, but why it is being consumed.

### Point-and-Click Configuration

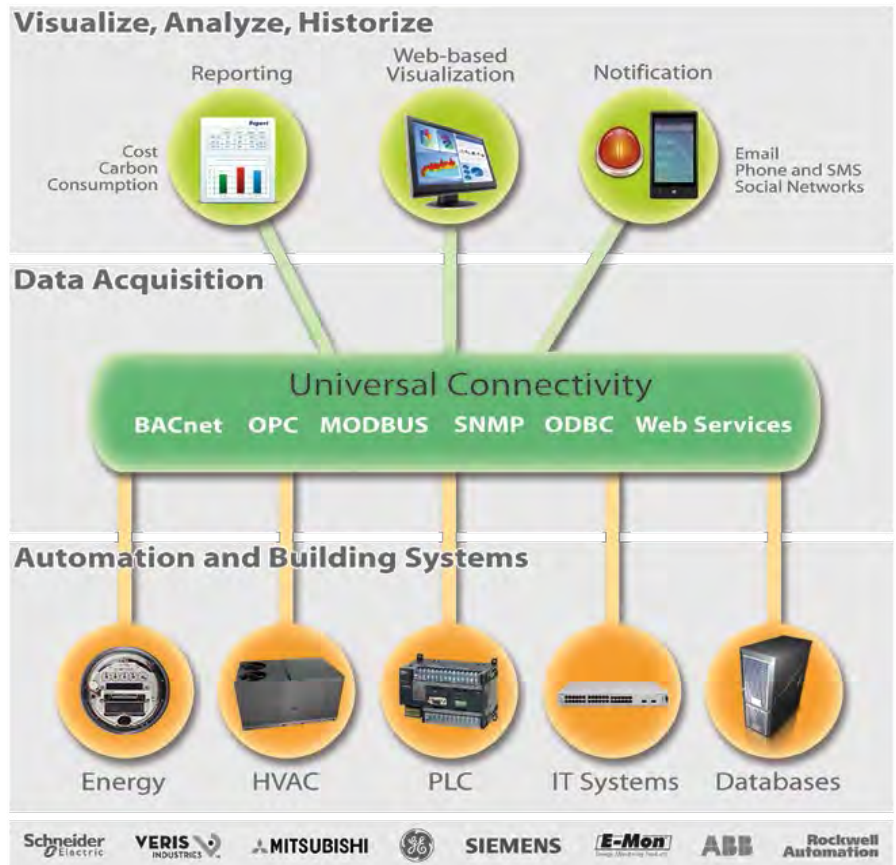
Energy AnalytiX employs Web-based Microsoft Silverlight® configuration capabilities, including an Asset Tree that provides intuitive easy setup and configuration to any level of aggregation, from an entire global enterprise down to a specific meter or piece of production equipment. Gain a global view, or monitor individual zones. When consumption offenders are suspected, drill down to the primary causes of energy inefficiency. With roll-up calculations, easily analyze groups of consumers within the same dimension. Normalize data by deriving variables, such as runtime, occupancy, or OAT, so that data is comparative and meaningful. Create custom KPI and visualization dashboards, as well as specialized reports, using the Energy AnalytiX solution. Design reports to be scheduled based on Date, Time, Value, Alert or on User Ad hoc Request.



## Actionable Information At Your Fingertips

Based on scalable Web 2.0 Microsoft Silverlight and SharePoint® technologies, Energy AnalytiX connects, analyzes, data logs and visualizes the right information in a way that is intuitive and easy to access. A Site Summary Overview helps provide instant information on energy consumption, financial costing and the carbon environmental impact. A standards-based ISA95 Asset Tree allows for rapid and simple navigation of the site-summarized reports and charts.

You are just one click away from understanding energy costs and how to improve the returns to your bottom line. Alerts and an extensive alarm management system provide information wherever you may be, by sending SMS text messages and emails, as well as using social networks and rich mobile phone apps.



## Open Standard Connectivity

Innovative universal data integration, based on industry open standards such as OPC, BACnet, SNMP, Modbus and Web Services, lets you manage energy consumption, costs and environmental by simply adding our solution to your existing network.

## Benefits

- Scalable from a single production line to a global enterprise
- Universal connectivity – OPC, BACnet, SNMP, and Web services
- Rich visualization via the Web using Microsoft Silverlight®
- Standard and custom calculations:
  - \$ / Sq. Foot
  - Energy Cost / Unit of Product Produced
  - CO<sup>2</sup> / Unit of Product Produced
  - Total CF Air / Plant
  - € / Sq. Meter
  - kWh / Occupant / Hour
  - Avg kWh / Department or Cost Center
  - CO<sup>2</sup> / Person
- Collaborate and social network using Microsoft SharePoint®
- Integrated with Microsoft SQL StreamInsight® and Office
- Clock synchronization, supports UTC for accurate totals
- Automatic adjustment for bad sensor readings
- Help meet regulations and be LEED compliant

## Applications

- Pharmaceutical and Life Sciences
- Food and Beverage
- Oil and Gas
- Plastics and Injection Molding
- Pulp and Paper
- Automotive
- Chemical and Petroleum
- Machine Builders
- Electronics and Semiconductor
- Conveying and Packaging
- Heavy Industry



# Real-time Operational Efficiency

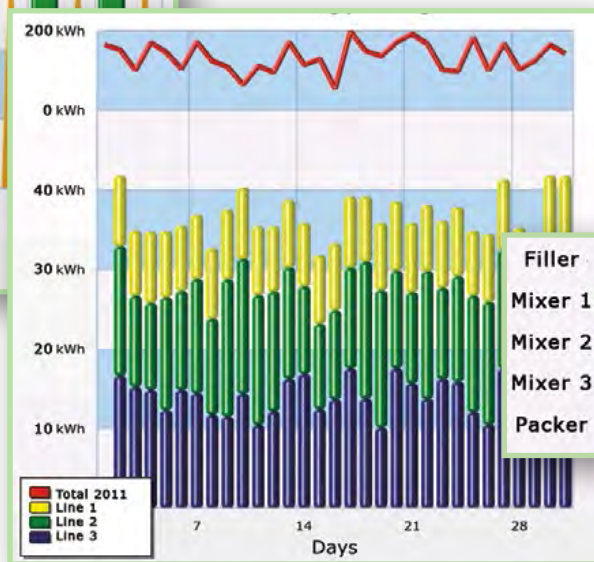
Operational Performance

Natural navigation to identify energy-saving opportunities



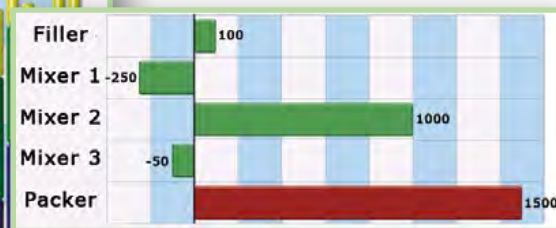
Energy Consumption

Line Analysis



Equipment Efficiency

Equipment Analysis



Easily Find Energy Offenders



Founded in 1986, ICONICS is an award-winning independent software developer offering real-time visualization, HMI/SCADA, energy, fault detection, manufacturing intelligence, MES and a suite of analytics solutions for operational excellence. ICONICS solutions are installed in 70% of the Fortune 500 companies around the world, helping customers to be more profitable, agile and efficient, to improve quality and be more sustainable.

ICONICS is leading the way in cloud-based solutions with its HMI/SCADA, analytics, mobile and data historian to help its customers embrace the Internet of Things (IoT). ICONICS products are used in manufacturing, building automation, oil & gas, renewable energy, utilities, water/wastewater, pharmaceuticals, automotive and many other industries. ICONICS' advanced visualization, productivity, and sustainability solutions are built on its flagship products: GENESIS64™ HMI/SCADA, Hyper Historian™ plant historian, AnalytiX® solution suite and MobileHMI™ mobile apps. Delivering information anytime, anywhere, ICONICS' solutions scale from the smallest standalone embedded projects to the largest enterprise applications.

ICONICS promotes an international culture of innovation, creativity and excellence in product design, development, technical support, training, sales and consulting services for end users, systems integrators, OEMs and Channel Partners. ICONICS has over 300,000 applications installed in multiple industries worldwide.

**World Headquarters**

100 Foxborough Blvd.  
Foxborough, MA, USA, 02035  
Tel: 508 543 8600  
Email: us@iconics.com  
Web: www.iconics.com

**European Headquarters**

Netherlands  
Tel: 31 252 228 588  
Email: holland@iconics.com

**Czech Republic**

Tel: 420 377 183 420  
Email: czech@iconics.com

**France**

Tel: 33 4 50 19 11 80  
Email: france@iconics.com

**China**

Tel: 86 10 8494 2570  
Email: china@iconics.com

**Italy**

Tel: 39 010 46 0626  
Email: italy@iconics.com

**United Kingdom**

Tel: 44 1384 246 700  
Email: uk@iconics.com

**India**

Tel: 91 22 67291029  
Email: india@iconics.com

**Germany**

Tel: 49 2241 16 508 0  
Email: germany@iconics.com

**Australia**

Tel: 61 2 9605 1333  
Email: australia@iconics.com

**Middle East**

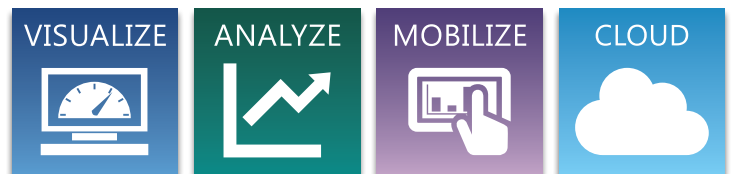
Tel: 966 540 881 264  
Email: middleeast@iconics.com

**Microsoft Partner**

Gold Application Development

**Microsoft Partner**

2014 Partner of the Year Winner  
Public Sector: CityNext



**Further information:**  
[www.iconics.com/energyanalytix](http://www.iconics.com/energyanalytix)



© 2015 ICONICS, Inc. All rights reserved. Specifications are subject to change without notice. AnalytiX and its respective modules are registered trademarks of ICONICS, Inc. GENESIS64, GENESIS32, Hyper Historian, BizViz, PortalWorX, MobileHMI and their respective modules, OPC-to-the-Core, and Visualize Your Enterprise are trademarks of ICONICS, Inc. Other product and company names mentioned herein may be trademarks of their respective owners.